

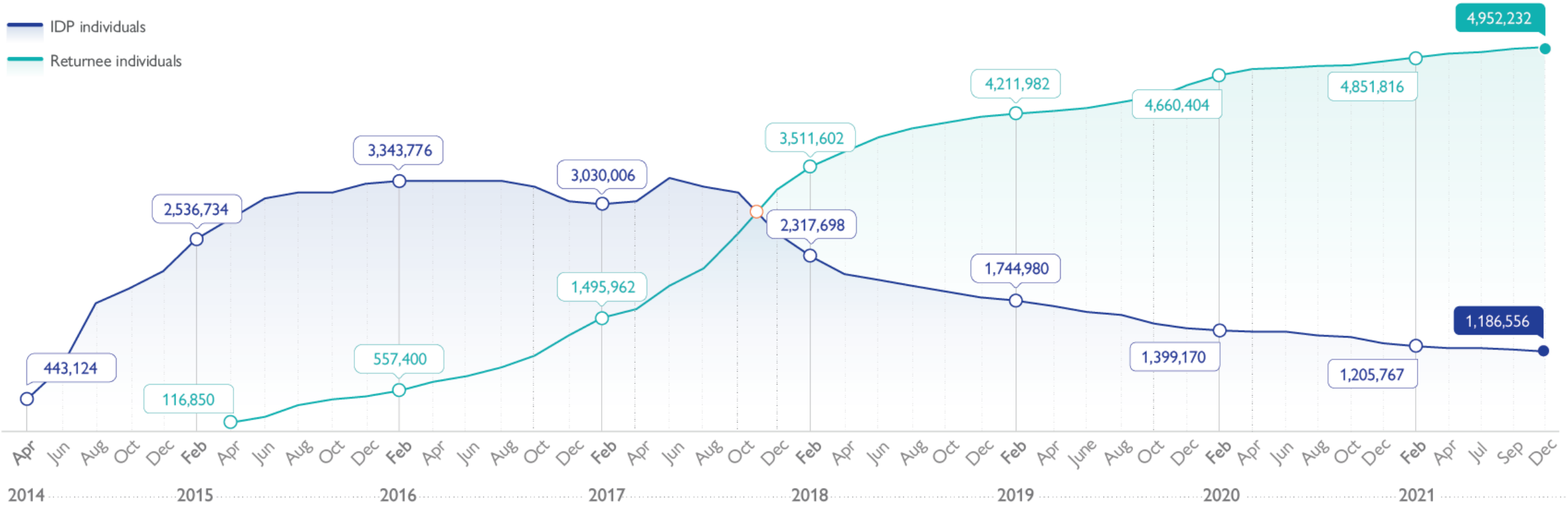


Displacement and Returns Update

Returns Working Group, 25 January 2022



Latest displacement data (OCTOBER – DECEMBER 2021)



Latest displacement data (OCTOBER – DECEMBER 2021)



IDPs

 **1,186,556**
Individuals


 **203,730**
Households

 **18**
Governorates


105
Districts

 **2,817**
Locations

-3,025 IDPs since last round

 **76%**
PRIVATE SETTINGS
902,448

 **15%**
CAMPS
179,120

 **9%**
CRITICAL SHELTERS
104,226

 **<1%**
UNKOWN
762

Returnees

 **4,952,232**
Individuals

 **825,372**
Households

 **8**
Governorates

38
Districts

 **2,179**
Locations

+13,158 returnees since last round

 **96%**
HABITUAL RESIDENCE
4,744,578

 **4%**
CRITICAL SHELTERS
193,494

 **<1%**
CAMPS
14,160

Return Index

Return Index Round 14



4,948,104 Returnees

+13,158

since Round 13 (August – September 2021)

8
governorates

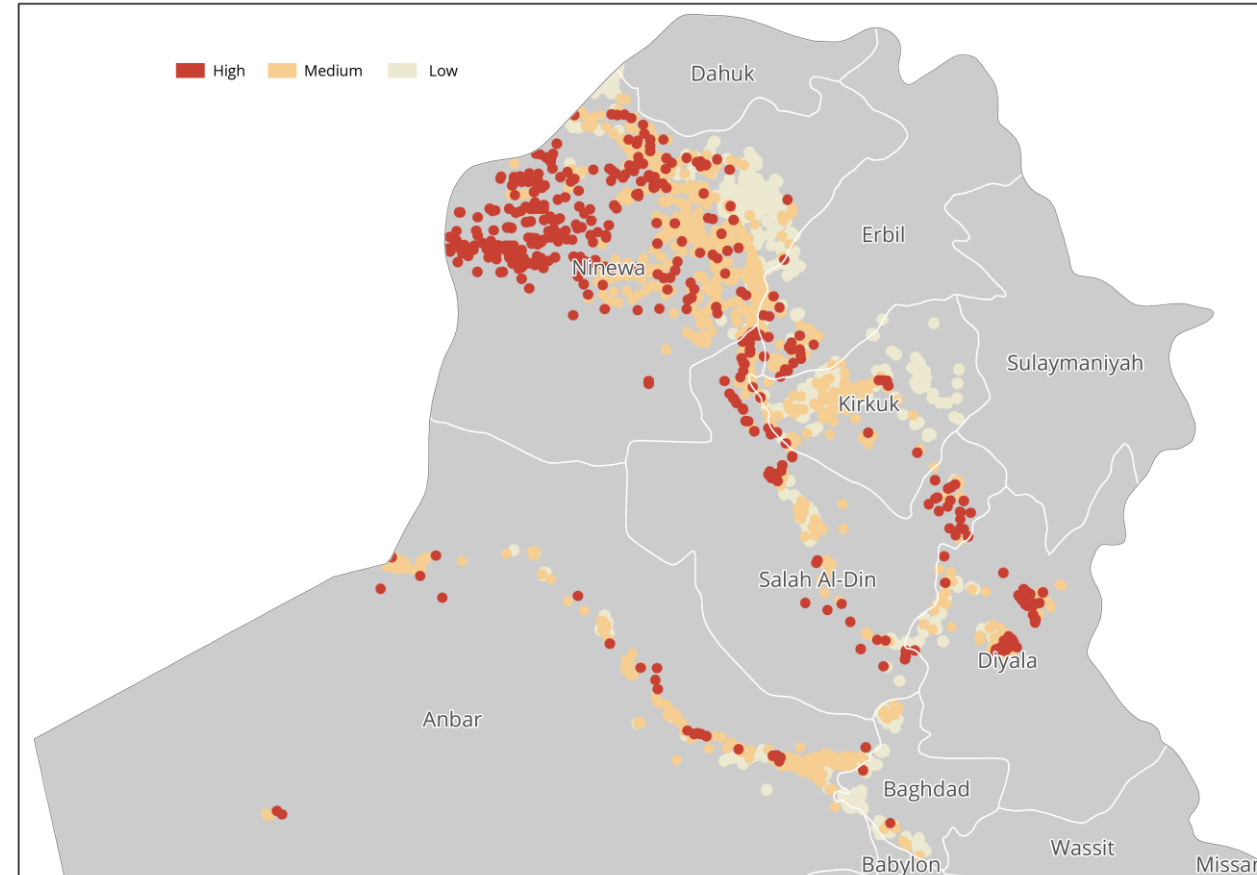
38
districts

824,684
households

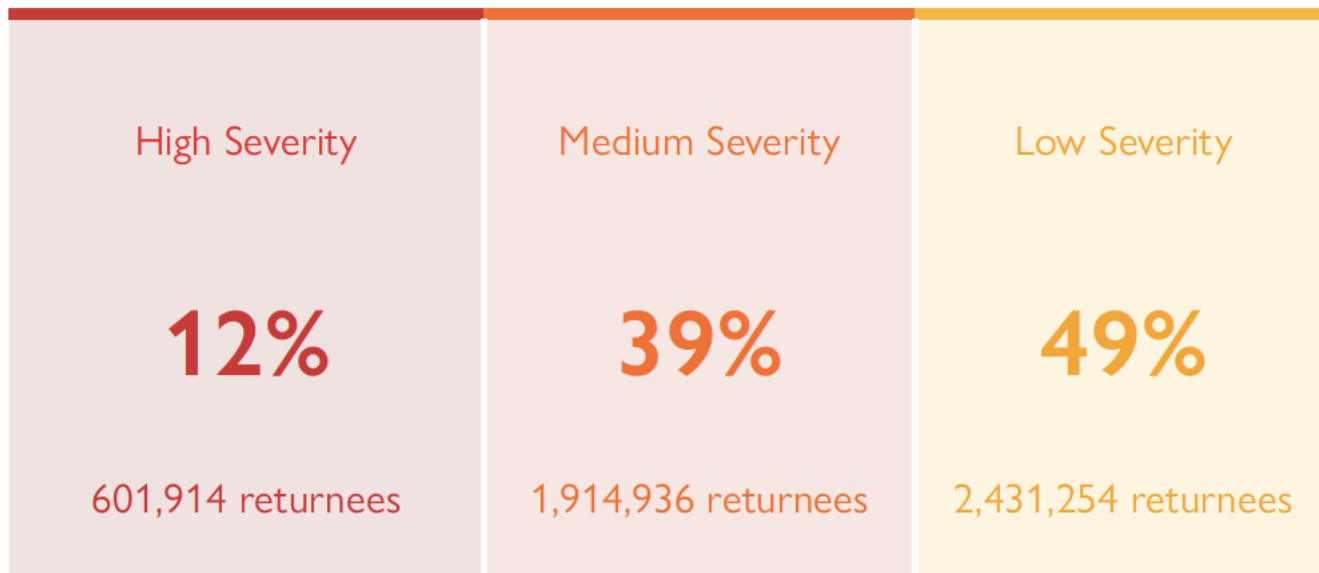
2,165
locations
+8 since Round 13

- The data for Round 14 of the Return Index was collected during the months of October, November and December 2021
- An additional 8 locations were assessed compared to the last round in August to September 2021, mainly in Ninewa.

Return locations per category of severity



Overall severity



- Out of the 2,165 return locations assessed, 459 present severe conditions hosting 12 per cent of the returnee population, or 601,914 individuals.
- This is an increase of 8,982 returnees living in severe conditions since the last round (August-September 2021 – 592,932 individuals or 12%)
- The largest increases were recorded in Salah al-Din (4,794) and Ninewa (3,270).

Governorate	HIGH SEVERITY	
	No. of returnees	No. of locations
Anbar	84,684	24
Baghdad	744	2
Dahuk	-	-
Diyala	43,080	43
Erbil	4,398	16
Kirkuk	1,824	7
Ninewa	260,070	283
Salah al-Din	207,114	84
Total	601,914	459

Hotspots per governorate



Thirty hotspots were identified across four governorates in this round.

SALAH AL-DIN

- Al-Amerli
- Al-Eshaqi
- Al-Moatassem
- Al-Siniya
- Markaz Al-Balad
- Markaz Al-Daur
- Markaz Al-Shirqat
- Markaz Baiji
- Markaz Samarra
- Markaz Tuz Khurmatu
- Suleiman Beg
- Yathreb

NINEWA

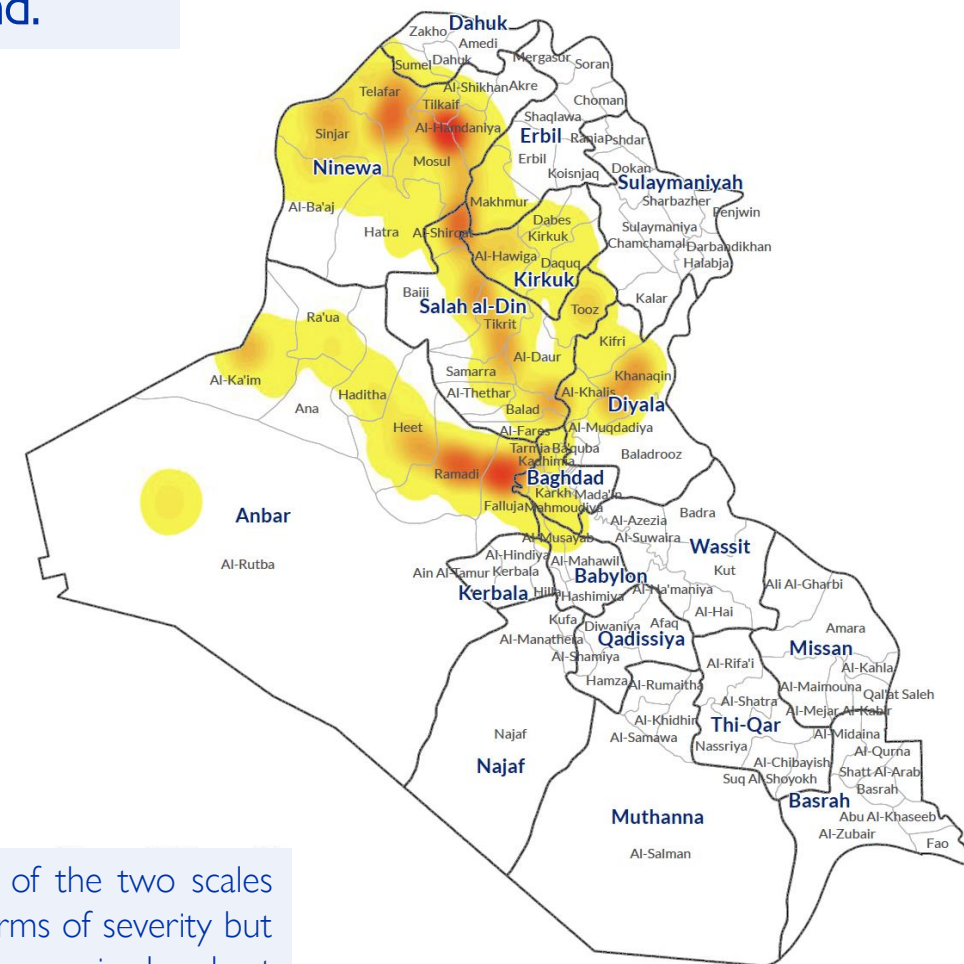
- Al-Qahtaniya
- Al-Shamal
- Ayadiya
- Hamam al Aleel
- Markaz Al-Ba'aj
- Markaz Sinjar
- Markaz Telafar
- Qaeyrrawan
- Zummar

ANBAR

- Al-Amirya
- Al-Forat
- Al-Garma
- Husaibah Al-Sharqiah
- Markaz Al-Ka'im
- Markaz Heet

DIYALA

- Jalula
- Markaz Al-Muqdadiya
- Qara Tabe

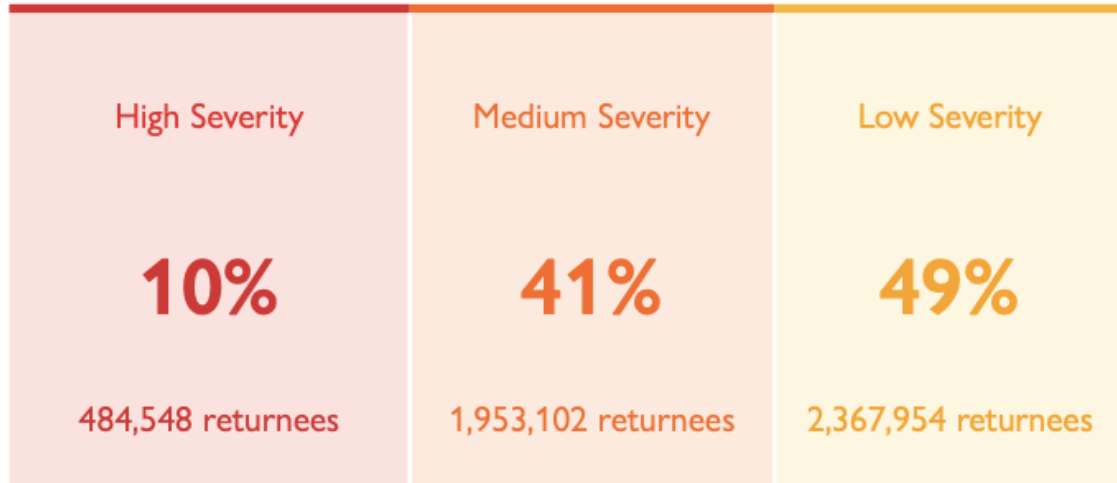


Subdistricts are classified as 'hotspots' if they score highly in terms of severity on at least one of the two scales (either livelihoods and basic services, or safety and social cohesion) or if they score medium in terms of severity but also host relatively large numbers of returnees. In this round, the criteria for selecting hotspots was revised and set to at least 60,000 returnees for a subdistrict in medium category to be considered highly populated and to be included to the list of hotspots.

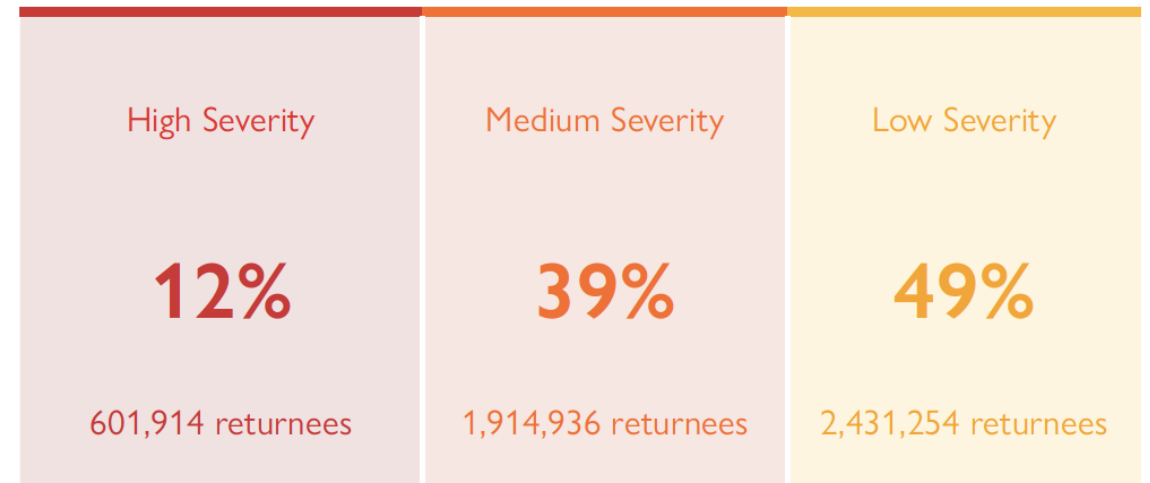
Conditions of Return 2021



December 2020



December 2021

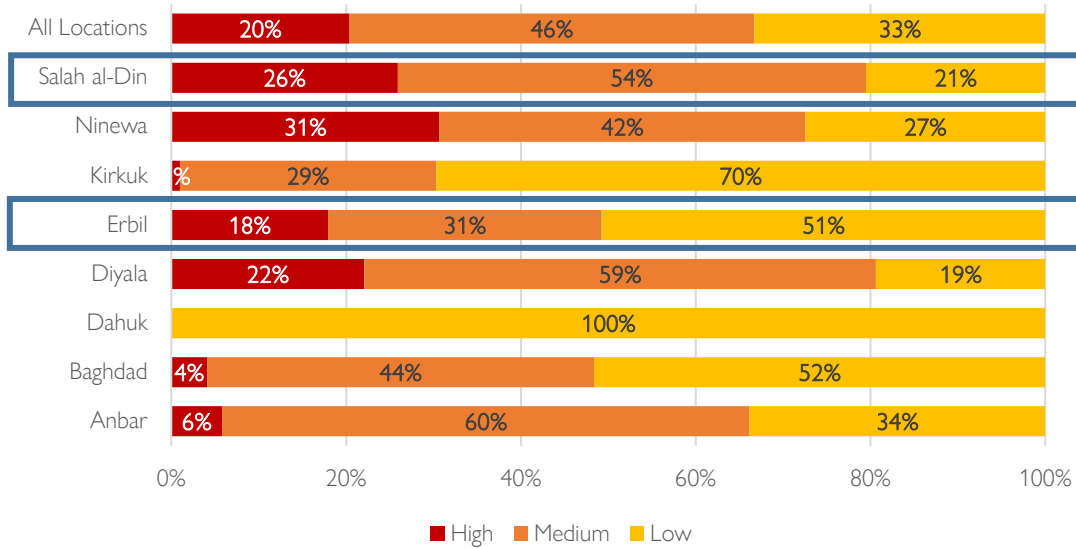


- Between December 2020 and December 2021, the returnee population grew by 120,666 equivalent to roughly 20,111 households.
- The rate of change, that is, the percentage change in the returnee population between rounds of data collection, slowed significantly in 2021 (2.5%) compared with 2020 (5%) and 2019 (10%).
- Between December 2020 and December 2021, the proportion of returnees in locations of high severity rose from 10 to 12 per cent, an increase of around 117,000 individuals.

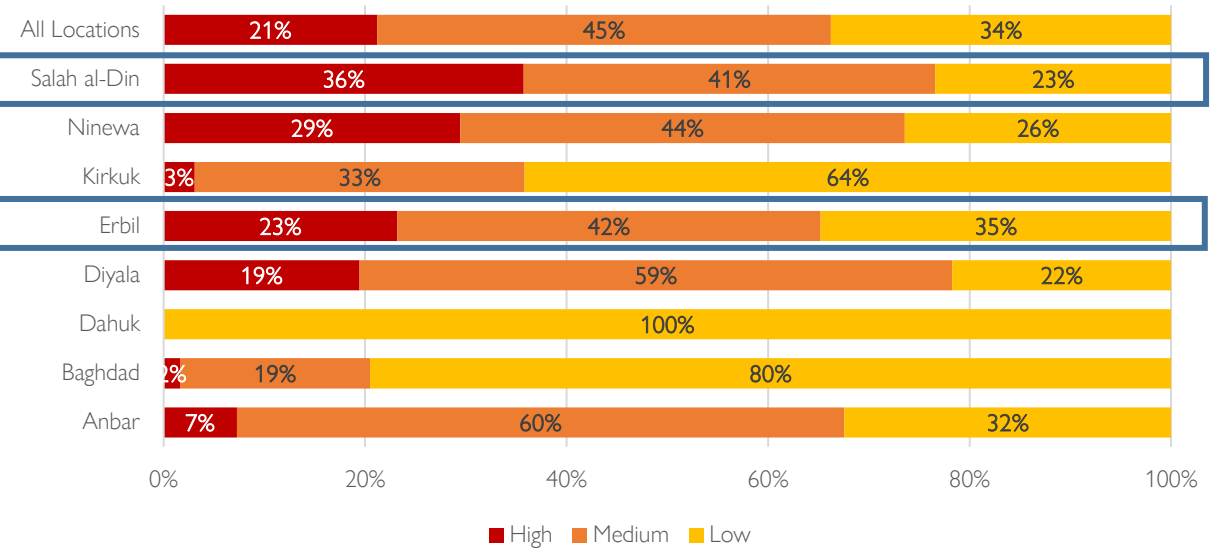
Severity of Locations



December 2020



December 2021



- In Salah al-Din, increases in locations with high severity were recorded in Al-Shirqat driven by an increase in the number of security actors and in Baiji, by returns to locations with extensive residential destruction, illegal occupation of private residences.
- In Erbil, the increases were driven by concerns of ISIL attacks and unexploded ordnance in Makhmur district, in addition to returns to locations with extensive residential destruction.