

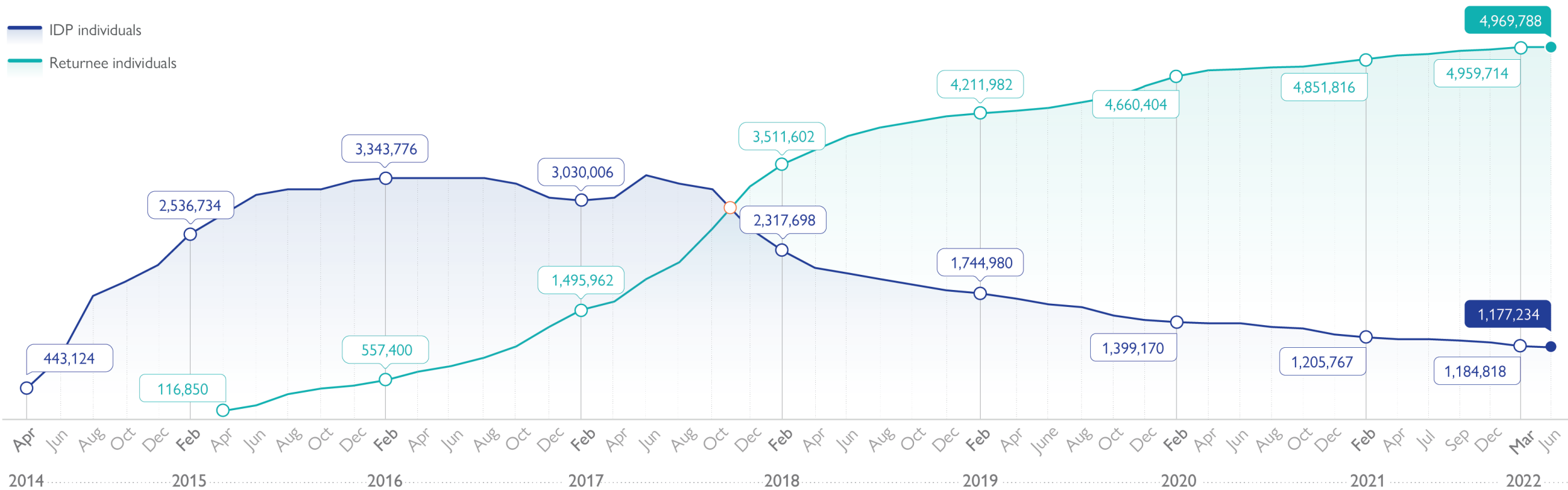


Displacement and Returns Update

Returns Working Group, 26 July 2022



Latest displacement data (APRIL – JUNE 2022)



Latest displacement data (APRIL – JUNE 2022)



IDPs

 **1,177,234**
Individuals

 **202,206**
Households

 **18**
Governorates

105
Districts

 **2,792**
Locations

-7,584 IDPs since last round

Returnees

 **4,969,788**
Individuals

 **828,298**
Households

 **8**
Governorates

38
Districts

 **2,191**
Locations

+10,074 returnees since last round



76% Private settings
890,448 Individuals



15% Camps
180,010 Individuals



9% Critical shelters
106,014 Individuals



<1% Other
762 Individuals



95% Habitual residence
4,766,694 Individuals



4% Critical shelters
189,162 Individuals



<1% Private settings
13,878 Individuals

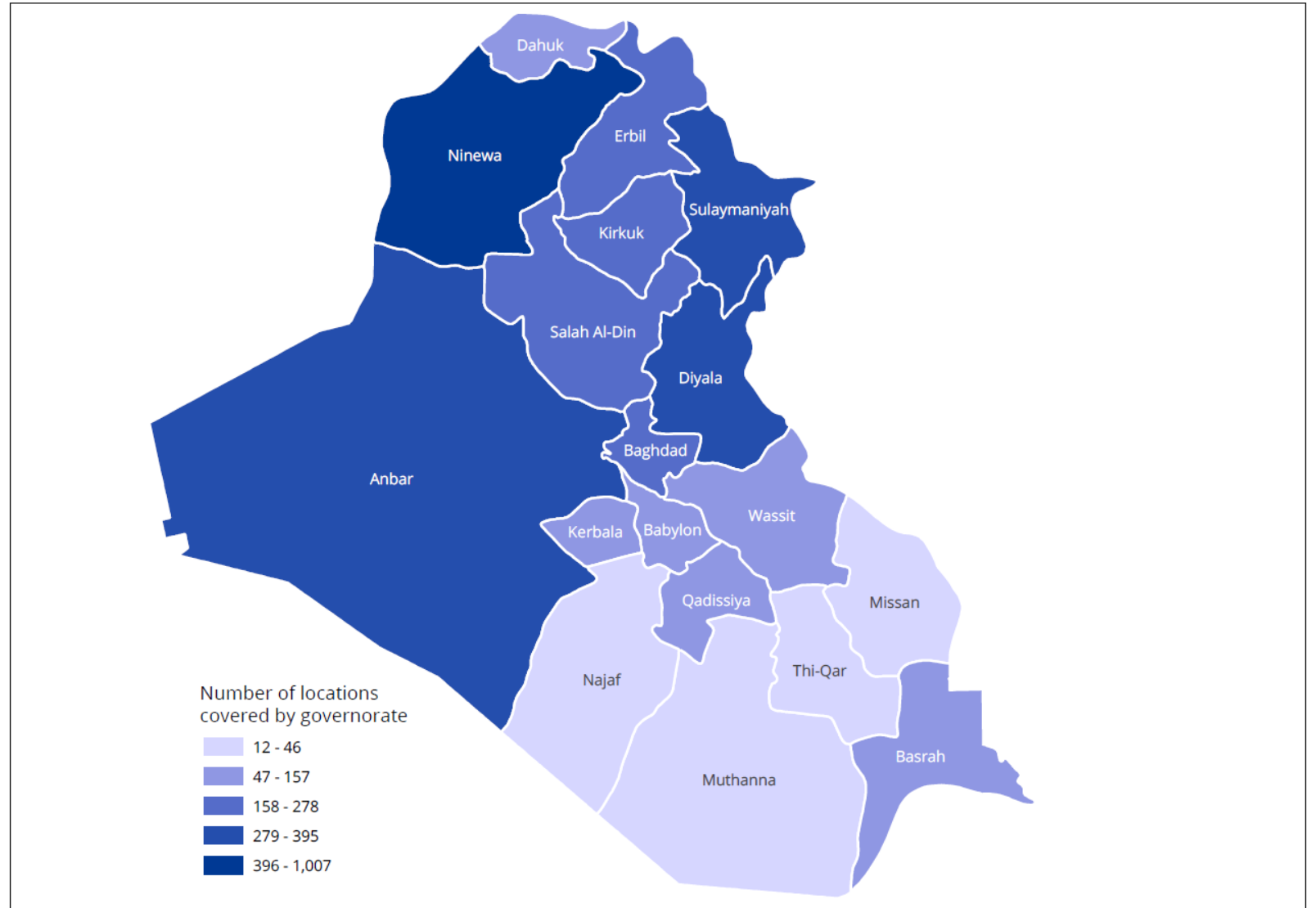


<1% Unknwn
54 Individuals

Integrated Location Assessment

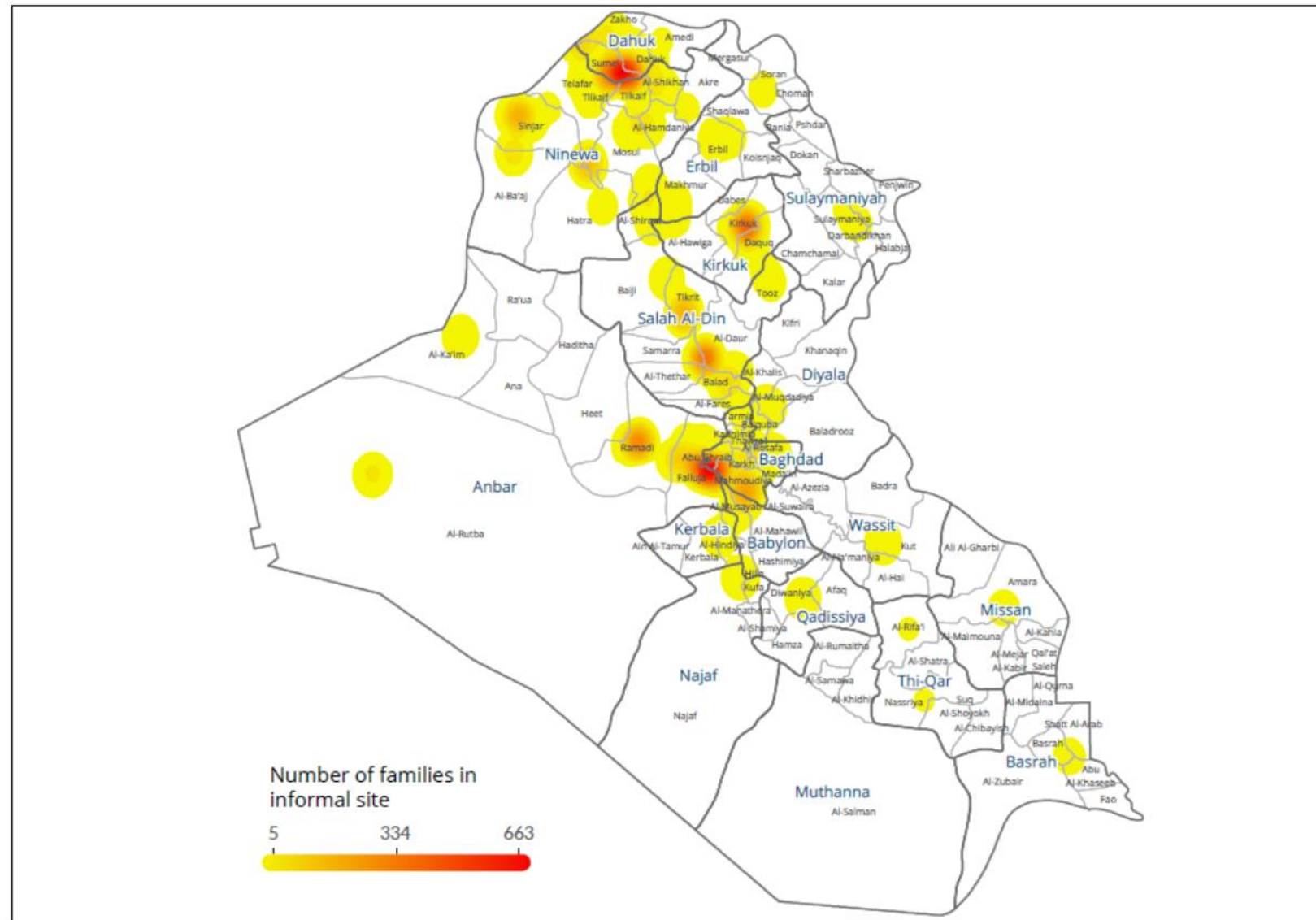
Integrated Location Assessment VII: Coverage

- Number of Assessed Locations : 3,717
 - 1,935 locations with IDP families (vs 2,792 in ML 126)
 - 2,154 location with returnee families (vs 2,191 in ML 126)
 - 420 locations host both returnees and IDPs
 - Difference between ILA and ML is due to excluding locations with fewer than 5 families
- # of IDPs reached: 195,793 families, 97% of total
 - Camps are included
- # of returnees reached: 827,201 families, 99% of total



Informal Sites Assessment: Coverage

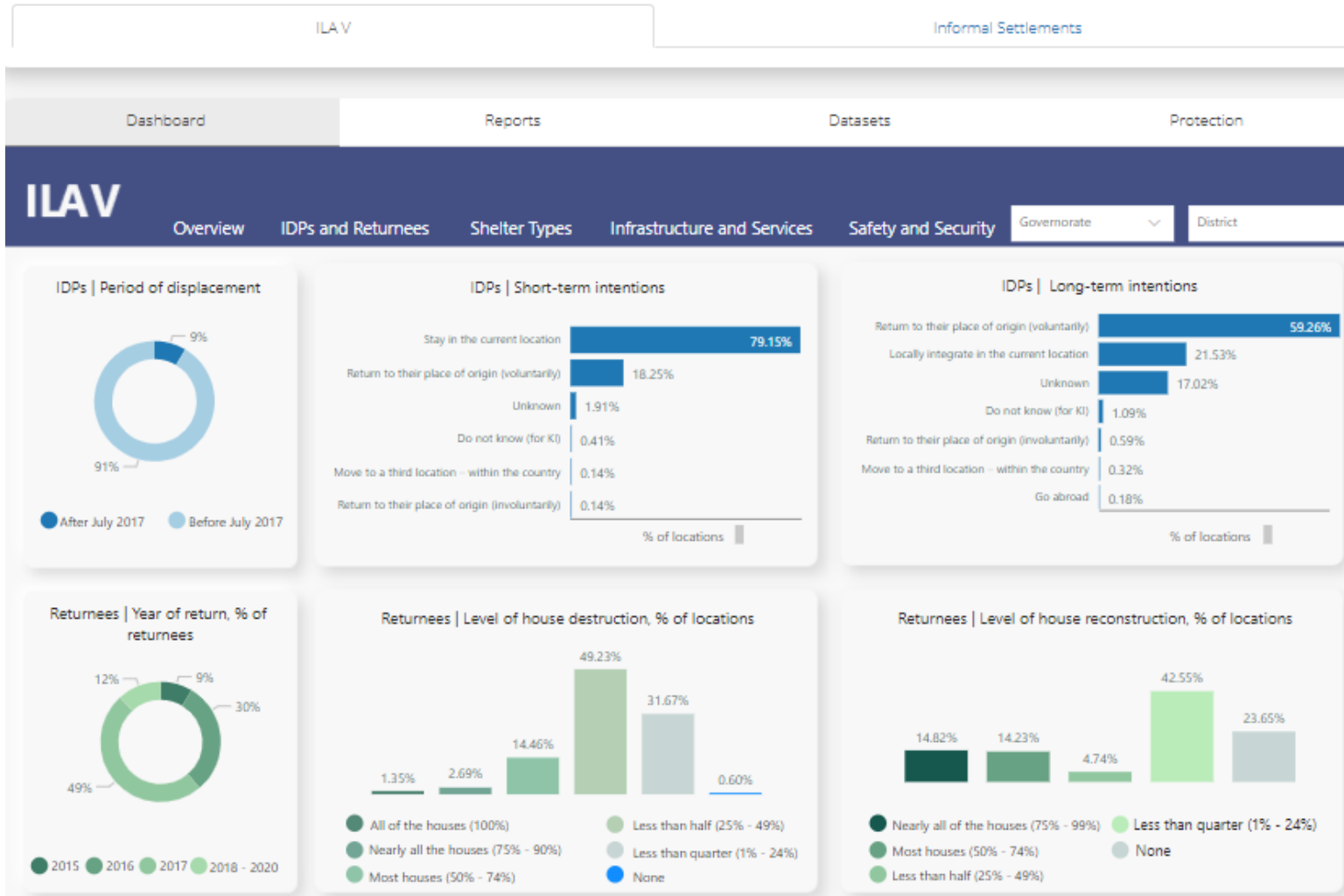
- 401 informal sites were identified with 5 or more families
 - 376 sites with IDPs
 - 27 sites with returnees
 - 2 sites are mixed
- Extended informal sites assessment was conducted in 192 sites where 15 or more families resided
 - 185 sites with IDPs
 - 9 sites with returnees
 - 2 sites are mixed



Integrated Location Assessment VII: Timeline

Available at: iraqdtm.iom.int

- Main dataset, main dashboard – by end of July
- Informal sites dataset, informal sites dashboard – by end of July
- Protected dataset, protected dashboard – early August
- All reports (IDP, returnee and informal sites) – early October



LOCATION ASSESSMENT REPORTS

