

# Durable Solutions Interventions

## *Facilitated Voluntary Returns*

# Durable Solutions Network

Informal platform developed by IOM, together with UNHCR, NRC, DRC, IRC, ACTED, and the Nonviolent Peace Force, as well as other partners, in order to:

- Develop and pilot methodologies and tools to support durable solutions in Iraq;
- Implement projects and interventions built around “facilitated voluntary returns” for IDPs in camps, beginning with Salamiya and HAA camps in Ninewa and AAF in Anbar;
- Exchange information on best practices, lessons learned, innovative approaches, etc.;
- Support mobilisation of resources to support durable solutions interventions.

DSN works in coordination with existing structures including OCHA, humanitarian clusters, Returns Working Group, development actors / DCO, UN Senior Advisor on Durable Solutions and others.

# Protracted Displacement Framework

Category	<b>Category 1:</b> <b>Service or material interventions</b>	<b>Category 2:</b> <b>Community reconciliation, dialogue and social interventions</b>	<b>Category 3:</b> <b>Advocacy and negotiation</b>
Return Obstacles	<ul style="list-style-type: none"> <li>• Damaged / destroyed housing</li> <li>• Lack of economic opportunity / jobs</li> <li>• Lack of basic services (water, electricity, education, health, etc.)</li> <li>• HLP challenges and secondary occupation</li> <li>• Mental health issues (e.g. trauma, depression, PTSD, etc.)</li> <li>• ERW / UXO / IED contamination</li> <li>• Lost, damaged or invalid civil documentation</li> </ul>	<ul style="list-style-type: none"> <li>• Ethno-religious tension, or tribal disputes</li> <li>• Perceived affiliation to extremists (allowed to return by authorities but fearful of revenge, reprisal, lack of community acceptance, including children)</li> <li>• Other issues preventing acceptance of returnees by communities (e.g. mental health)</li> <li>• Fear of a resurgence in conflict</li> </ul>	<ul style="list-style-type: none"> <li>• Areas blocked (militias)</li> <li>• Perceived affiliation to extremists (blocked from return by authorities)</li> <li>• Security clearance</li> <li>• House occupation (by armed groups)</li> </ul>

For Anbar and Ninewa camps in the context of facilitated returns”, DSN is focusing primarily on support to IDPs facing obstacles in “category 1” (shelter, livelihoods, access to basic services, protection, etc.). Partners are also involved in activities around social cohesion, reconciliation and related issues.

# Supporting IDPs still in camps to return

DS Network partners are supporting activities designed to facilitate return for IDPs still in camps. This process includes:

- Sensitisation and outreach in camps through “help desks”
- Outreach and engagement in areas of origin
- Go-and-see visits
- Community Committees
- Area-Based Interventions
- Community Centers

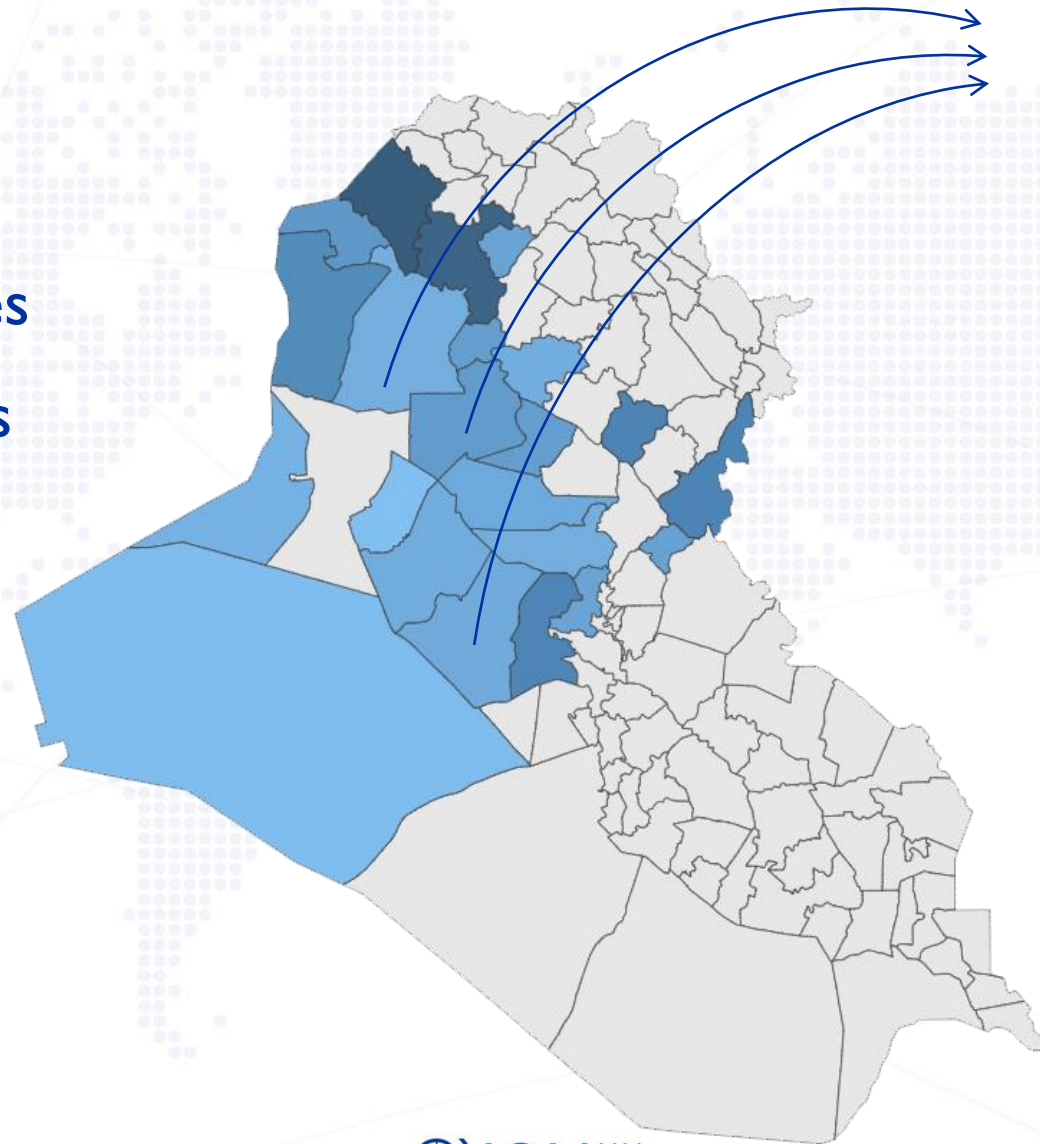
## Area of origin of IDPs in Salamiya and AAF who signed up at help desks

<b>Ninawa</b>	<b>1386</b>
Sinjar	646
Al-Baaj	612
Al-Mosul	58
Telefar	52
Al-Hamdaniya	15
Al-Hatra	1
Al-Shikan	1
<b>Al-Anbar</b>	<b>395</b>
Al-Falluja	279
Al-Kaim	70
Al-Ramadi	37
Al-Rutba	6
Haditha	3
<b>Baghdad</b>	<b>68</b>
Al-Kadhmiyah	68
<b>Total</b>	<b>1850</b>



# Areas of origin

Multi-sectoral, area-based interventions supporting returning IDPs, other returnees and vulnerable host community members



## Area Based Interventions

1. Access Support
2. Transportation
3. Health
4. Shelter
5. Reinstallation cash grants
6. Livelihoods support
7. Housing, land and property (HLP) assistance
8. Community-level infrastructure
9. Protection
10. Post-return reintegration support services

## Service Providers

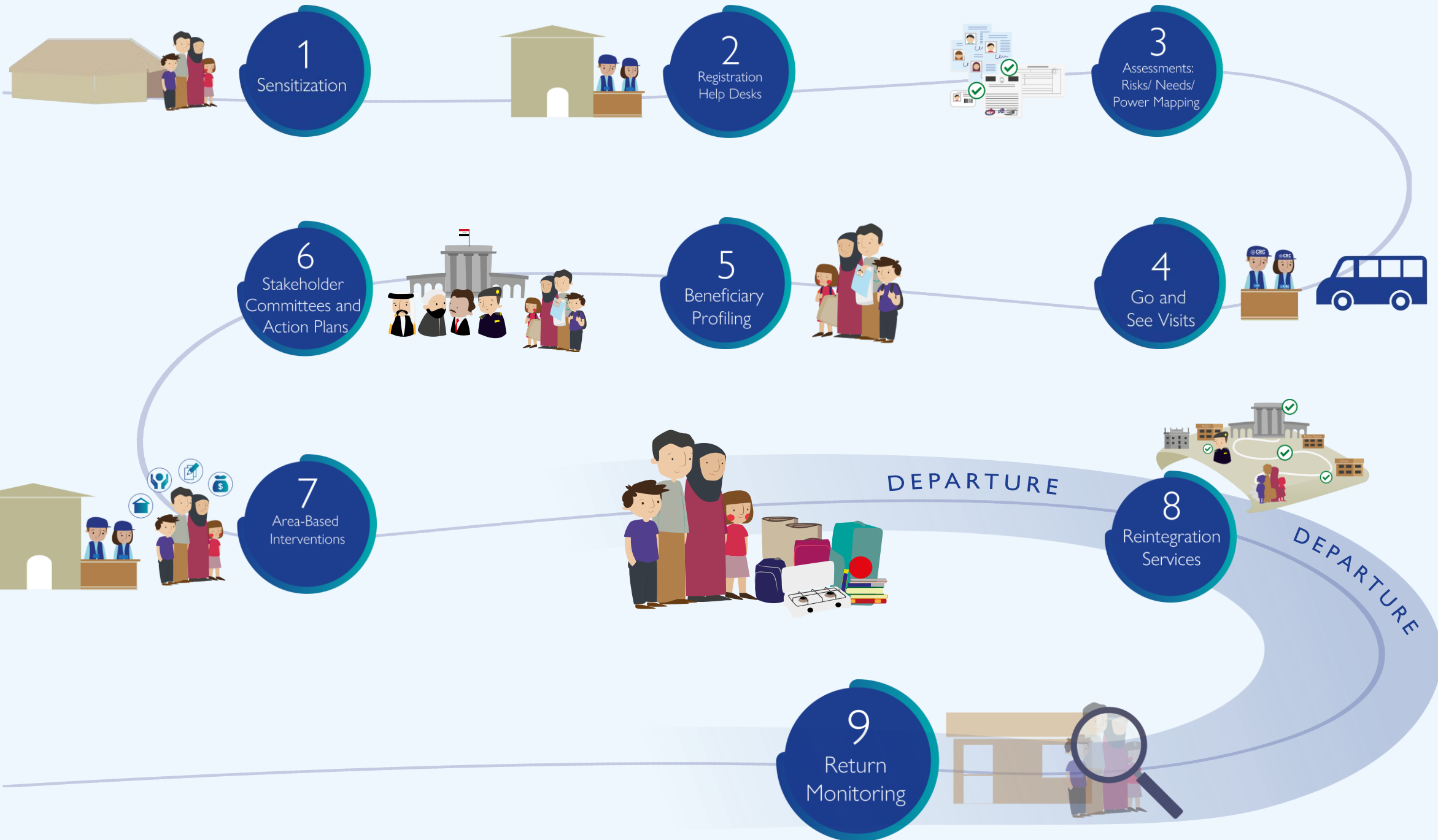
Partners	Services in locations
IOM	235
Acted	145
DRC	143
IRC	54
NP	34
UNMAS	15
IMS	8
UNHCR	2

# Departure Assistance Service Set

<b>Access Support</b>	Support services to facilitate freedom of movement and access
<b>Transportation (including asset removal)</b>	Transportation from camp and movement of assets
<b>Health</b>	In camp screening-consultation and referral upon departure
<b>Shelter</b>	<ul style="list-style-type: none"> <li>• Categories 1-2 housing rehabilitation (lightly or moderately damaged houses)</li> <li>• Categories 3-4 housing reconstruction (heavily damaged or totally destroyed houses)</li> <li>• Rural Cat 4 Home Reconstruction</li> <li>• Residential demining</li> </ul>
<b>Reinstallation cash grant</b>	Cash transfer for vulnerable households
<b>Livelihoods support</b>	Cash-for-work Sustainable livelihoods support
<b>Housing, land and property (HLP) assistance</b>	Assistance to households including documentation replacement and legal counseling

<b>Community-level infrastructure</b>	<p>Community-level infrastructure interventions</p> <ul style="list-style-type: none"> <li>• Restoration of basic public infrastructure (e.g. water, electricity, health and schools)</li> <li>• QIPs, Community Service Projects</li> </ul>
<b>Protection</b>	<ul style="list-style-type: none"> <li>• Household-specific             <ul style="list-style-type: none"> <li>○ Protection monitoring (including child protection and GBV)</li> <li>○ Case management</li> <li>○ Legal assistance/ representation/ counseling</li> <li>○ Civil documentation renewal/ replacement</li> <li>○ Mobile legal aid teams particularly for documentation, HLP and where applicable detention cases</li> <li>○ Cash for protection (where applicable)</li> <li>○ Static centers in areas of return to assist in case management</li> </ul> </li> <li>• Community-based protection             <ul style="list-style-type: none"> <li>○ Community committees / groups</li> <li>○ Community safety planning</li> <li>○ Peaceful co-existence / social cohesion activities</li> </ul> </li> </ul>
<b>Post-return reintegration support services</b>	<p>Reintegration and risk monitoring at both household and community level to assess impact of the return on families and the wider community</p> <ul style="list-style-type: none"> <li>• Emergency support services for at risk households / failed return contingency             <ul style="list-style-type: none"> <li>○ Hotlines (Iraq IDP Call Center)</li> <li>○ Community Centers</li> <li>○ Community committees</li> <li>○ Community policing/ community security forums</li> <li>○ Advocacy for relocation / alternative solutions</li> <li>○ Referrals</li> </ul> </li> </ul>

AAP  
CwC  
PROTECTION



Thank You